

# WIDE DIAMETER IMPLANTS

*The Right Choice*

*The Most Effective Technology for Immediate Molar Replacement.*

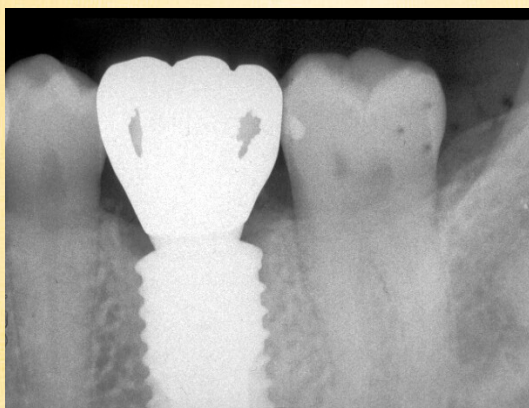
**Wednesday, October 5th, 2011**

**Registration 6:00 P.M.**

**Dinner & Program 6:30 - 7:30 P.M.**

Join us for an evening of education to discuss advanced technology in molar implant dentistry. The Rescue Implant is a super-wide bone level implant, providing the most effective technology for immediate molar replacement. This paradigm shift utilizing a wide diameter implant offers the following benefits to Increase Case Acceptance.

- Ability to place implant immediately after extraction of molar to preventing buccal bone loss & achieve optimum stability.
- Patients appreciate reducing the entire treatment period.
- Reduced cost to your patient due to elimination of socket preservation.
- Ability to eliminate Sinus Lift procedure.
- Ability to place implant when faced with the challenge of mandibular canal and a traditional length implant cannot be utilized.
- Ability to place implant with limited vertical bone.
- A wider implant allows for a more natural crown.
- A wide diameter implant in the molar area is easier to maintain hygienically and prevents food from getting trapped.
- To minimize biomechanical challenges.



**Concourse Airport Hotel &  
Conference Center**  
**4300 International Gateway**  
**Columbus, OH 43219**  
**(614) 237-2625**

**Dinner and 1 CE Credit included for  
attending the program—No Charge.**  
Compliments of Dr. M. Bath



*To register for the program, please  
call or email Maggie Daubemire—  
Professional Relations Coordinator.*

*Phone (614) 751-7500*

*Email: [prc@pickeringtonoms.com](mailto:prc@pickeringtonoms.com)*

 **MEGA<sup>1</sup>GEN**  
MegaGen USA Inc.